



**SATURDAY
FEB 24,
2018
WINTER
CELEBRATION**

**SATURDAY
JUNE 23,
2018
SUMMER
CELEBRATION**

.....
WWW.BLOOMINGDALE NJ.NET

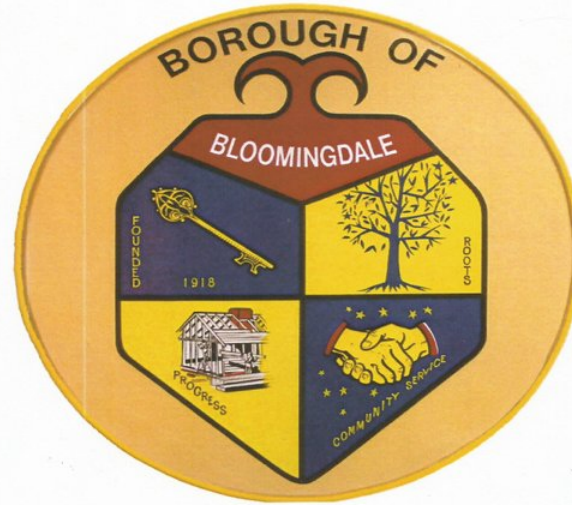
Bloomingtondale Centennial 1918 - 2018



1918

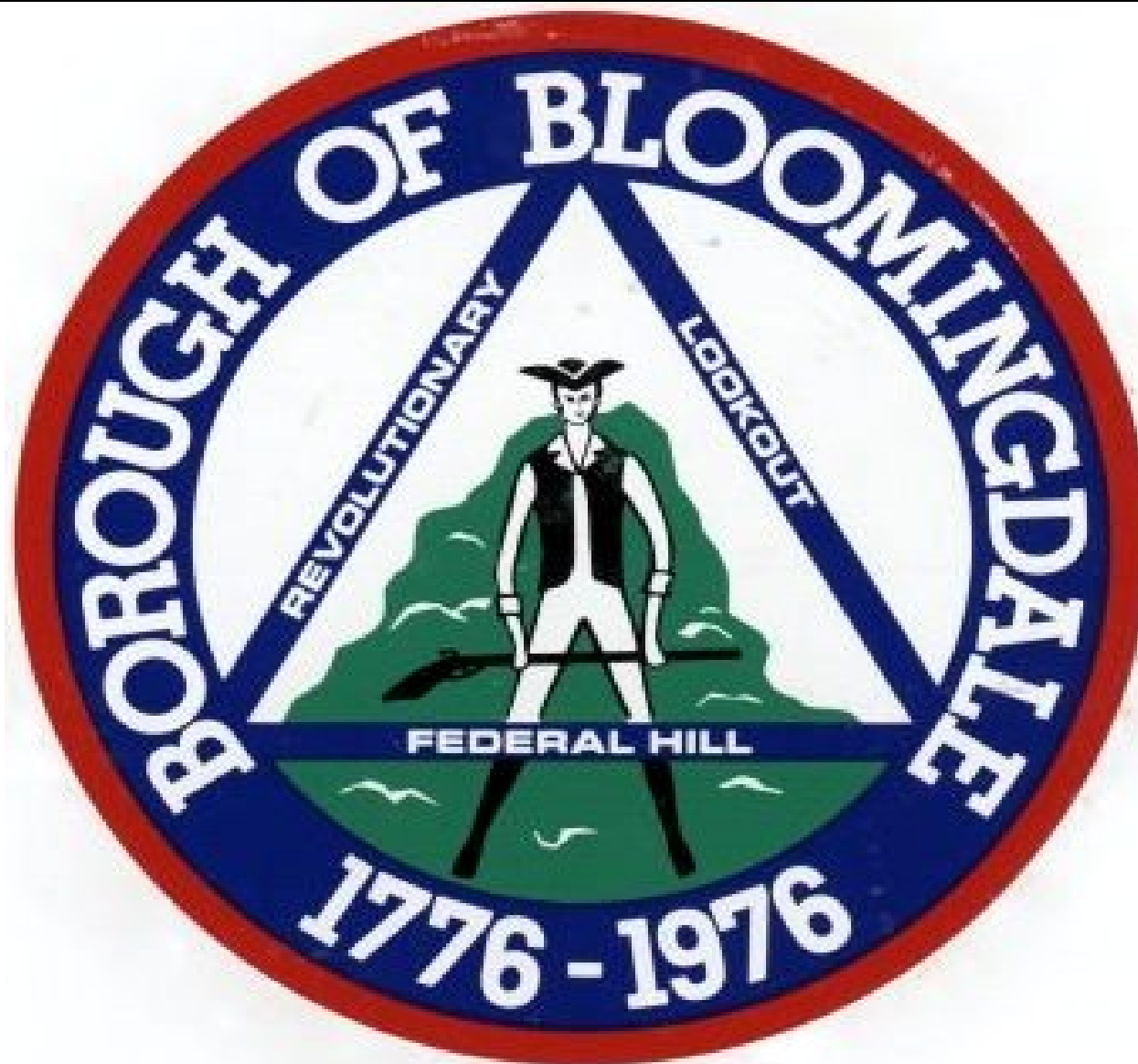
2018

Borough of Bloomingdale



Centennial

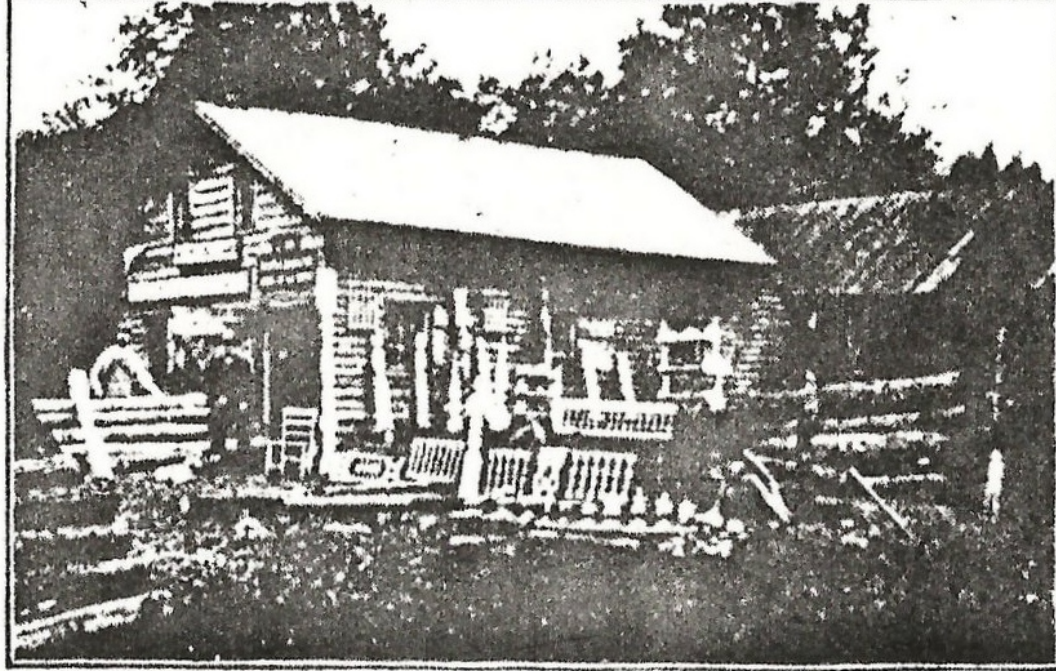






Birdseye View of Bloomingdale, N. J.





Established 1888

W. E. BLANCHARD

MANUFACTURER OF

**Turned Chestnut Clothes Lines and Tie Posts
in All Designs**

Main Street Bloomingdale, N. J.

Tel. 36-J Butler



W.E. BLANCHARD

WOOD TURNING & SCROLL SAWING.

STAIR
NEWELS, BALUSTERS
RAILS, OF ALL KINDS

















J. H. DEAR

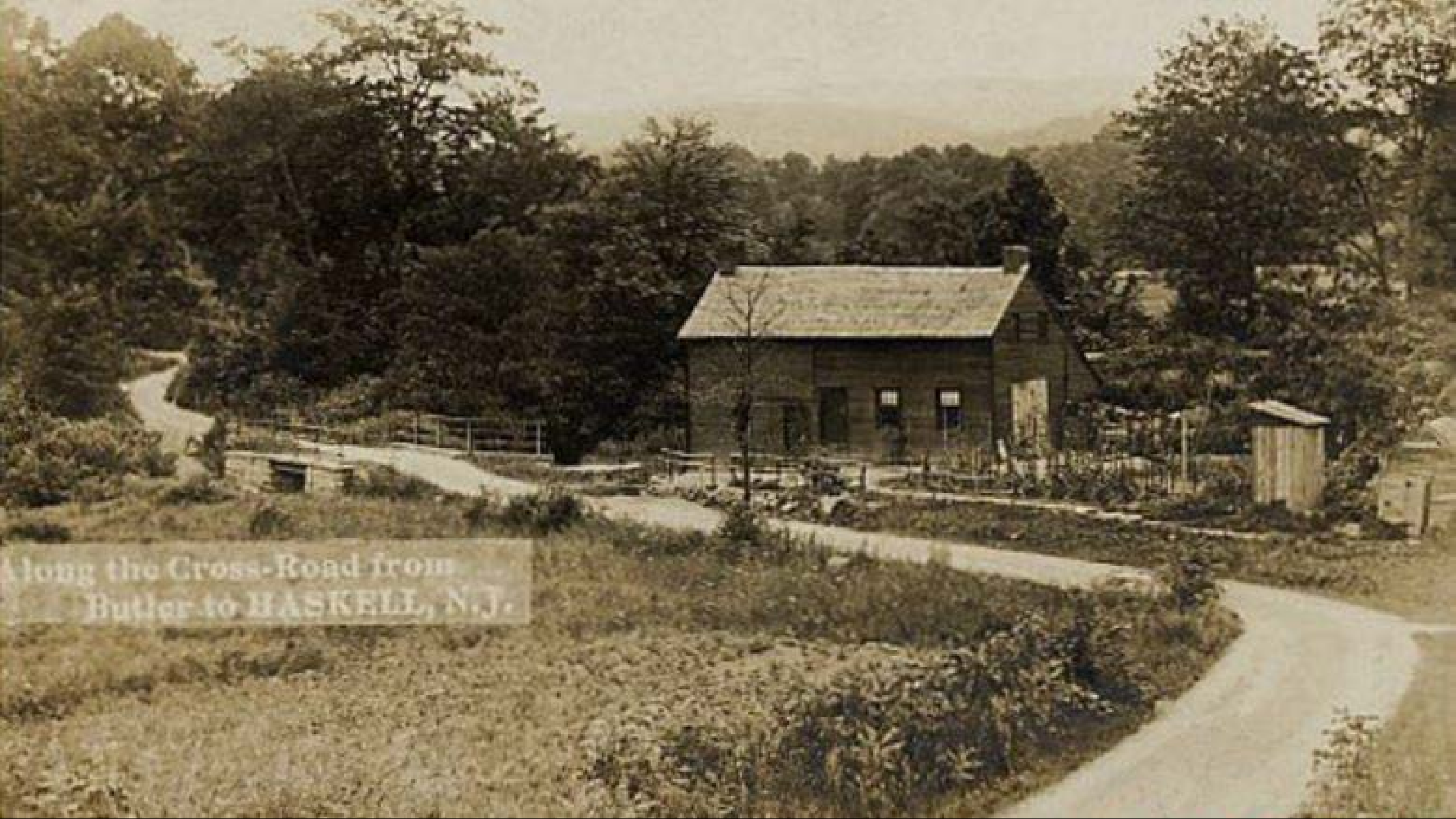
EDGE TOOLS SHARPENING

LAWN MOWERS
AXES
SCISSORS
KNIVES
AND SKATES










Along the Cross-Road from
Butler to HASKELL, N.J.



Main St.,
Bloomingdale, N. J.



Shown at
www.Family-Images.com

East Main Street, Bloomingdale, N. J.

GLEN WILD LAKE, BLOOMINGDALE, N. J.

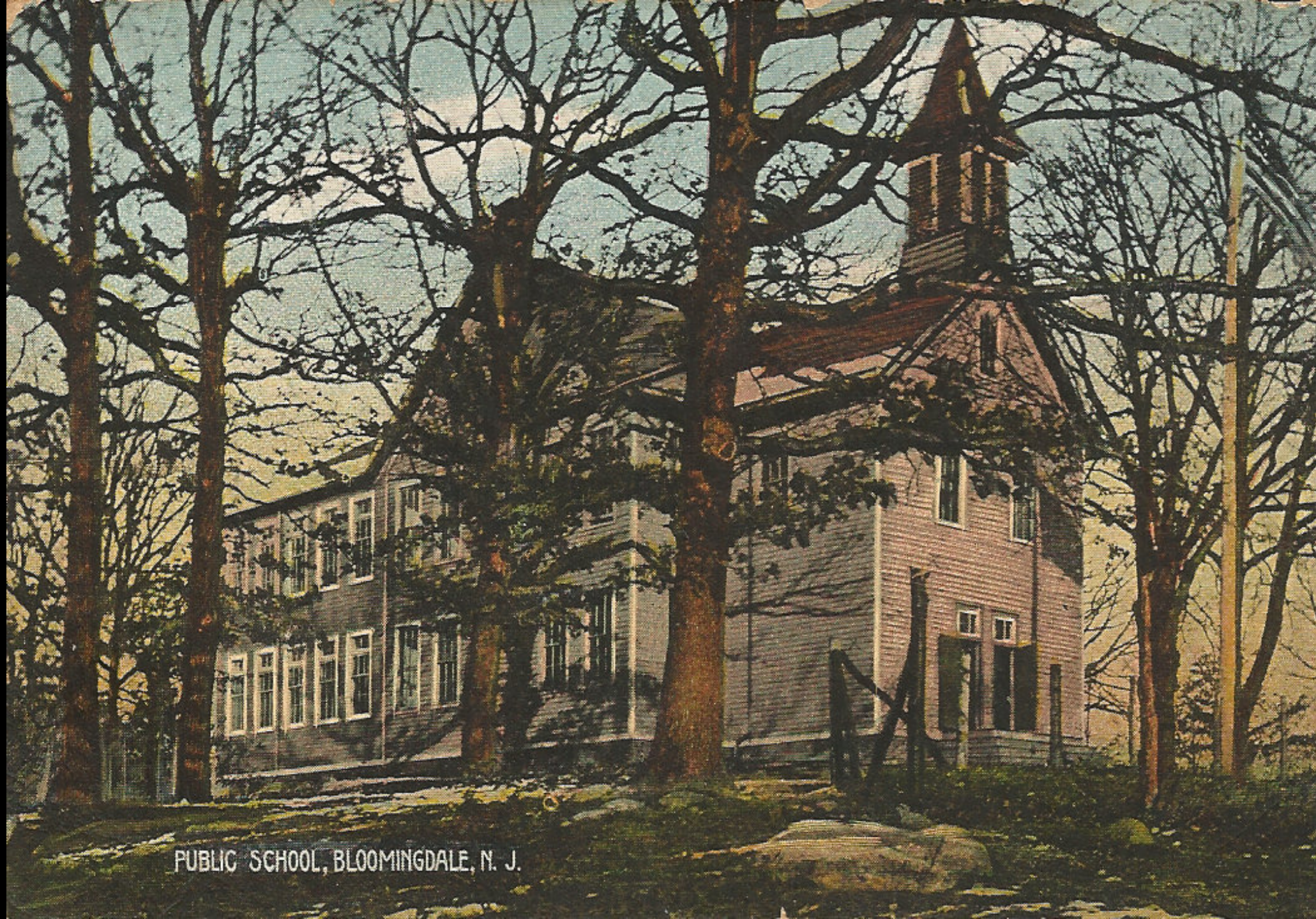












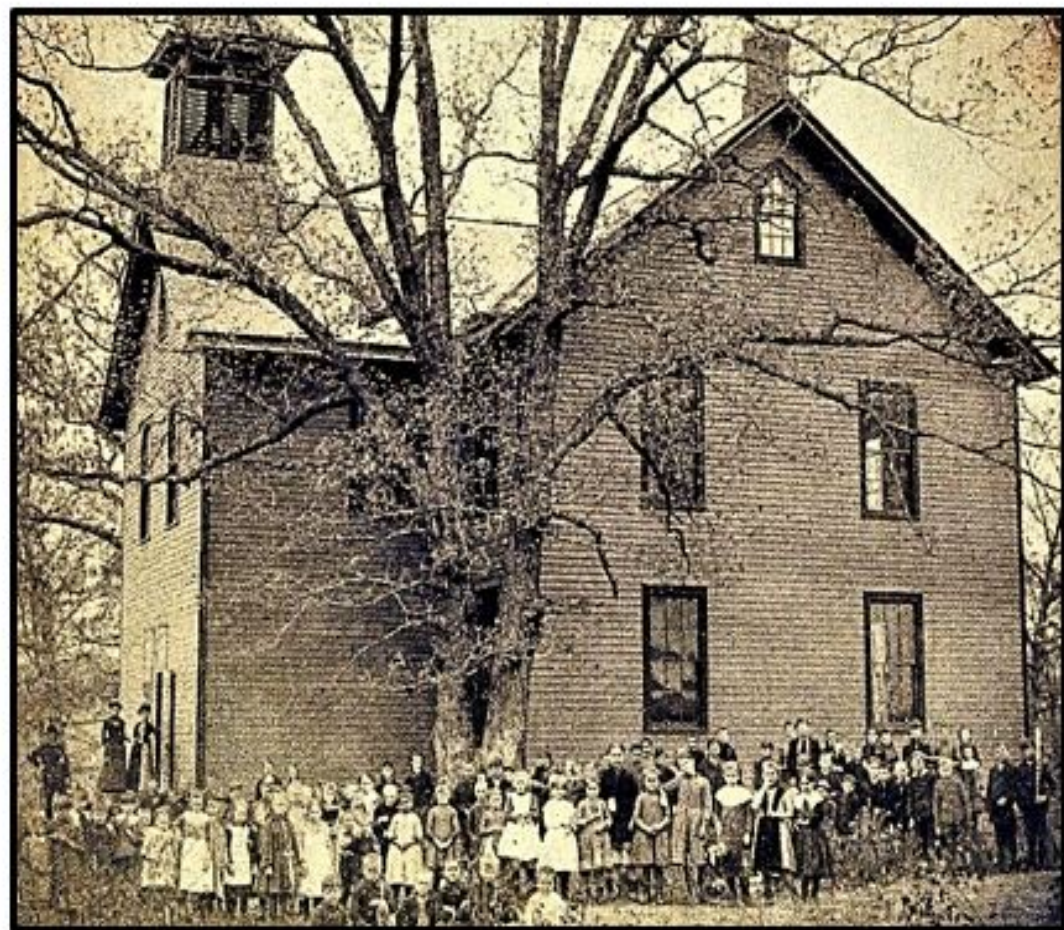
PUBLIC SCHOOL, BLOOMINGDALE, N. J.



Bloomingdale School 1890

Hilltop School

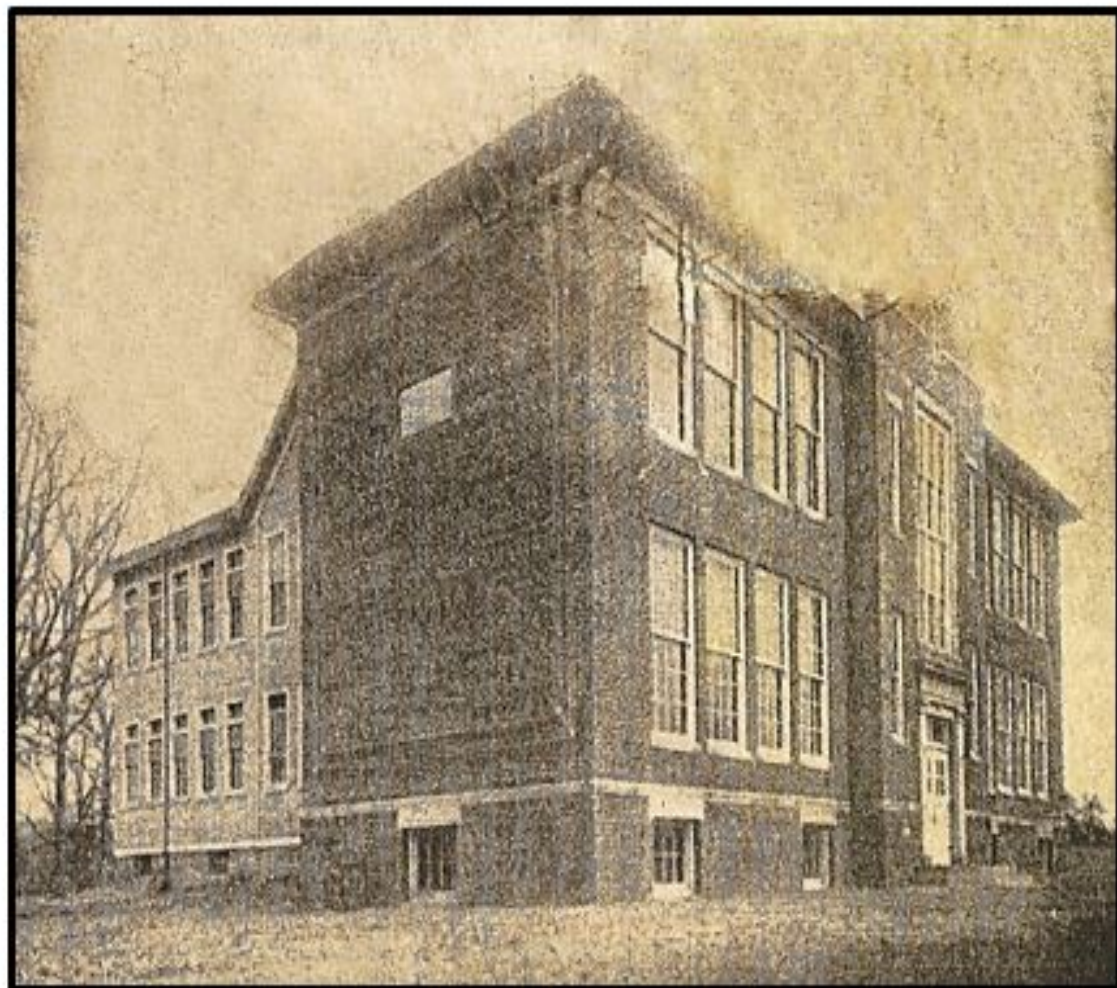
Samuel R. Donald School



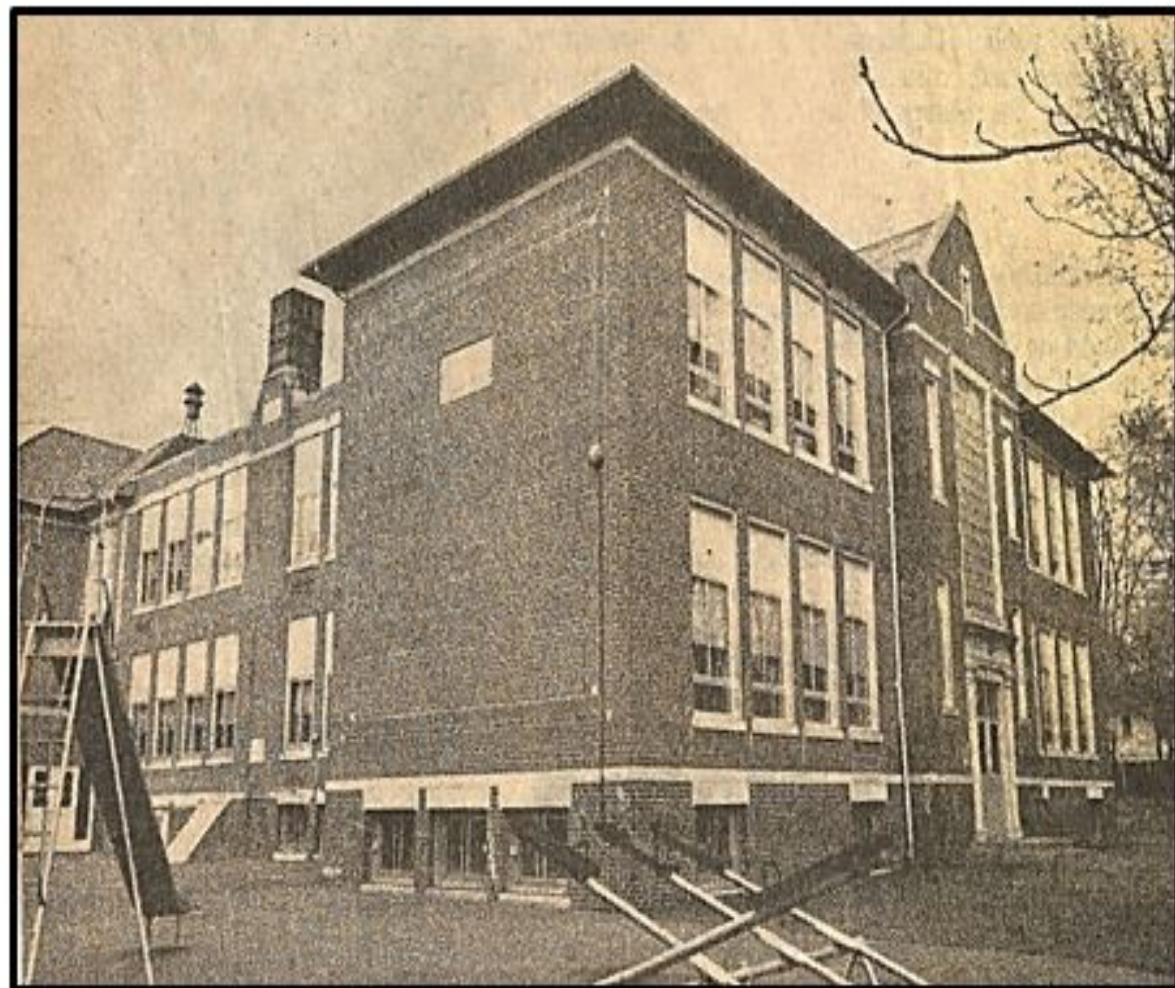
1886 - Original Building



After 1890 - Before 1918



1918



1938



1918

1938

1928



1928

1958

(Dates Indicate Additions)



Bloomingdale School's First Graduating Class



Emily Card Riley & Walter T. Bergen





Bloomingdale School 1948



Bloomingdale School Baseball , Jim Phillips on Right



Bloomington School Kindergarten 1953



Bloomingdale Teacher 1950's



Schroder

Shauger

Sheds

Roff

Webb

Bergen

Welch

Maxfield

Strickland

Ruth
Day

Bell

Kinney

Sheagen

Donald

Crowley

Bloomingdale Teachers 1950's



East Main Street, Bloomingdale, N. J.







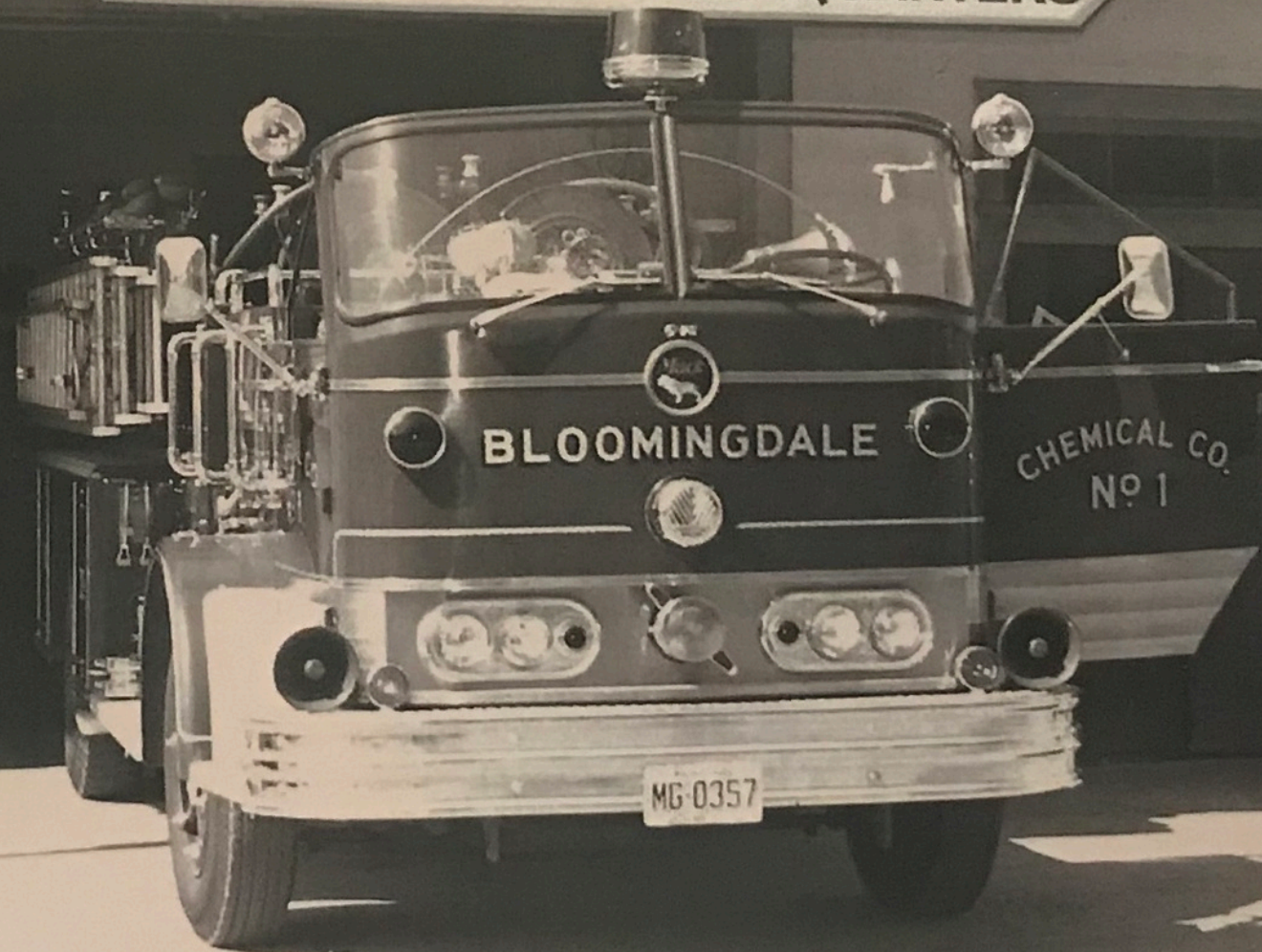




Bloomingdale Fire Department

1918 **50th** ANNIVERSARY **50th** 1968

**BLOOMINGDALE MUNICIPAL BUILDING
FIRE & POLICE HEADQUARTERS**





Forest Drive Apartments

In Memory of
Arnold Riley
SAW SHARPENING SERVICE
37 Union Avenue
Bloomington, New Jersey



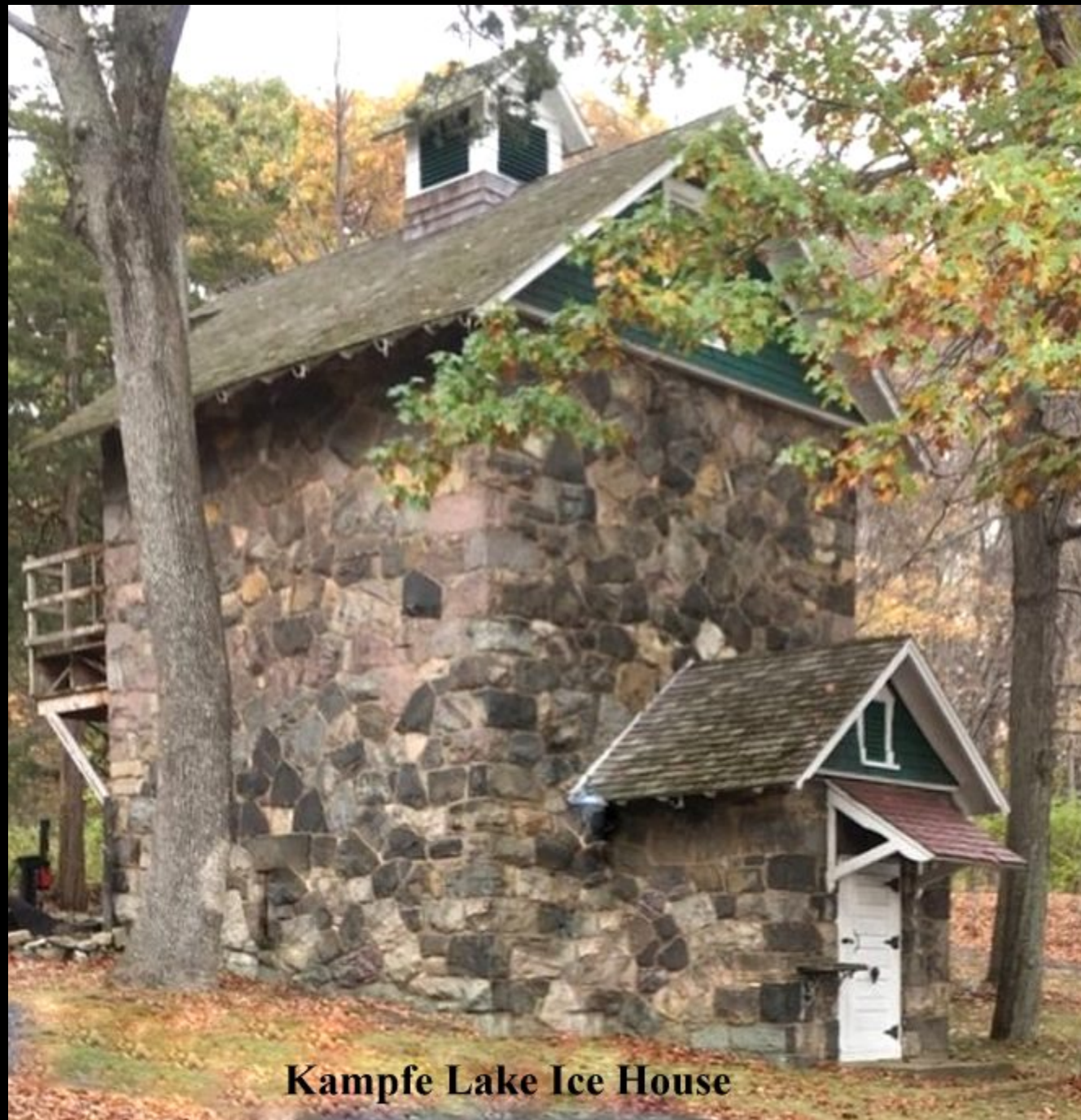
40 Years of Service



Bloomingdale GAR Post 92 Civil War Veterans







Kampfe Lake Ice House

HOME OF THE FAMOUS
Reeve Mad Dog Bite Cure

Established 70 Years

THIS REMEDY HAS NEVER FAILED

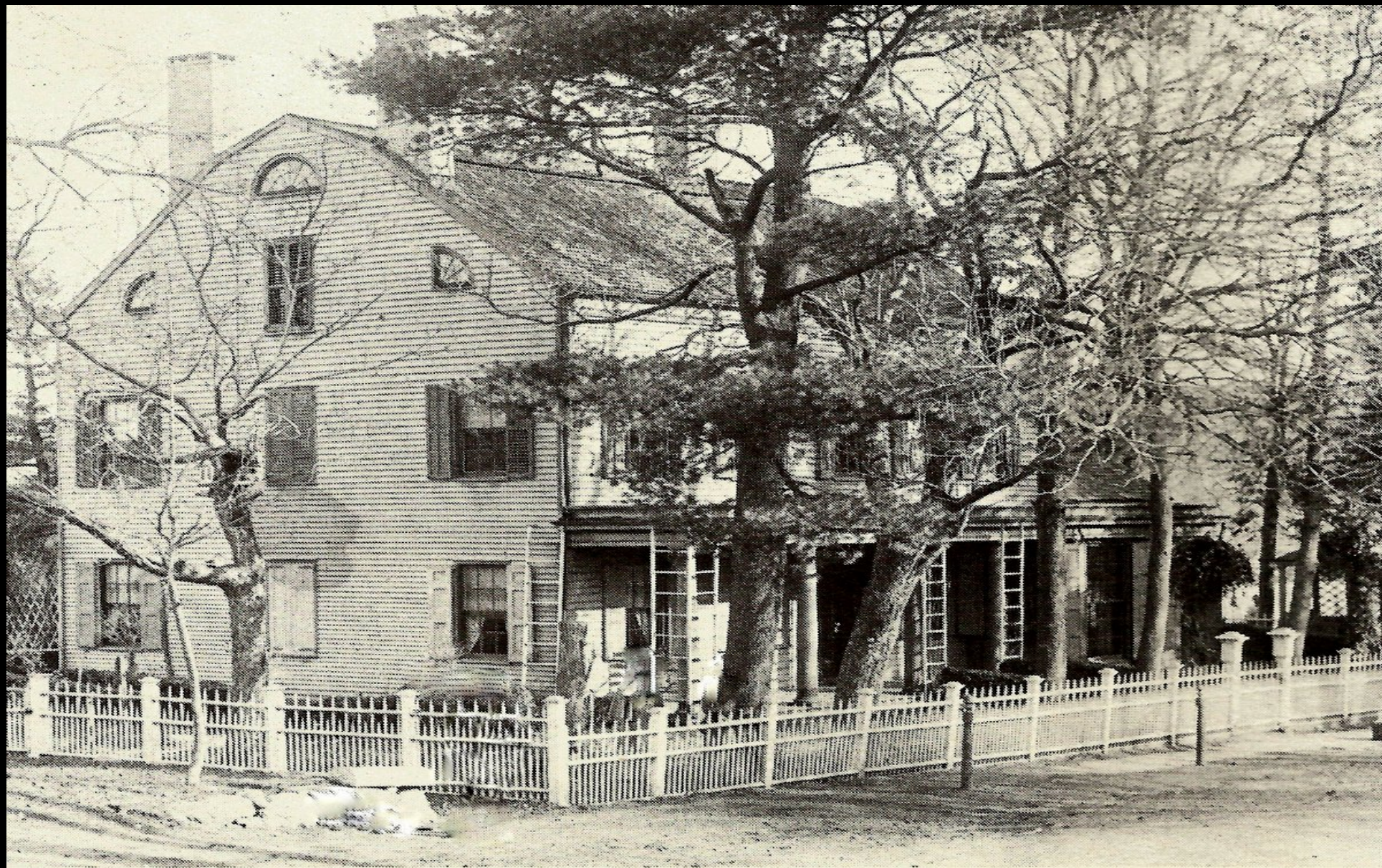


P. O. Box 86

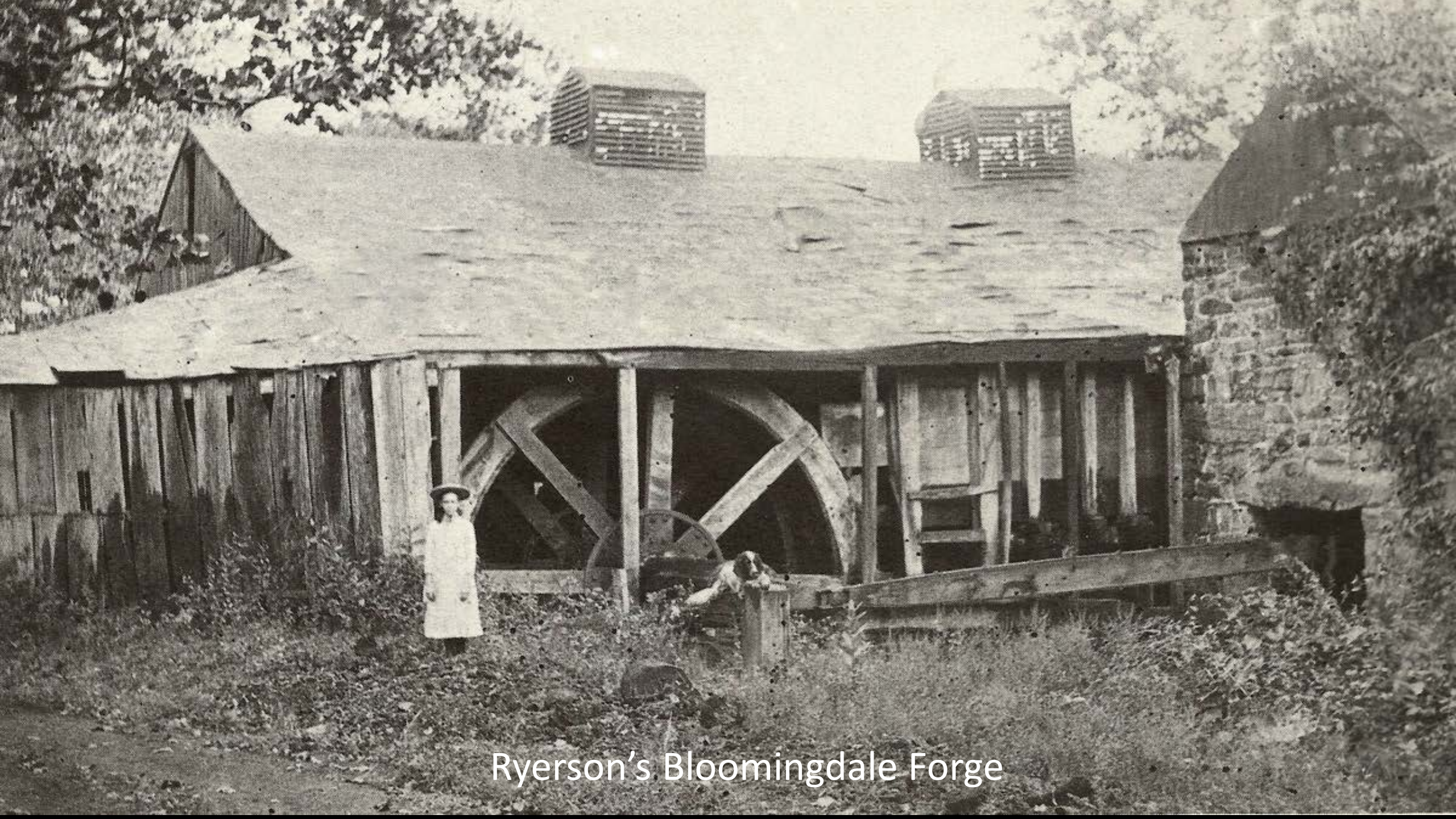
Telephone 36 R

Bloomington, New Jersey





Martin J. Ryerson House



Ryerson's Bloomingdale Forge



Bloominhdale Forge



Ryerson's Bloomingdale Forge

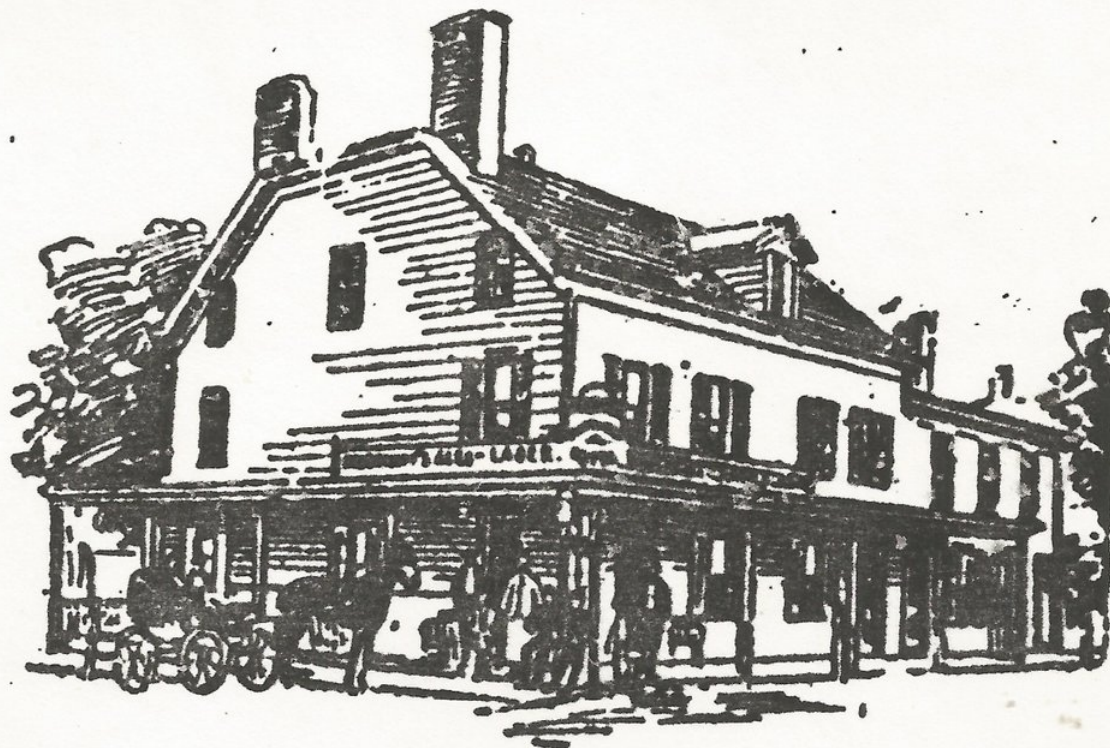




RELIC—The blacksmith's hammer held by George Struble of Bloomingdale, dates back before the Revolution. It was once used in the Ryerson Forge Shop, still standing in Bloomingdale, visited by Washington during his many trips in the area during the war. Interested on-lookers are John Bowersox, Bruce Bobrowski, Michael Barna, manual training teacher, holding modern hammer; Ronald Vieth, Raymond Anderson, George Carman, Howard Whitmore and Kenneth Anderson, all of Bloomingdale. (Herald-News Photo)

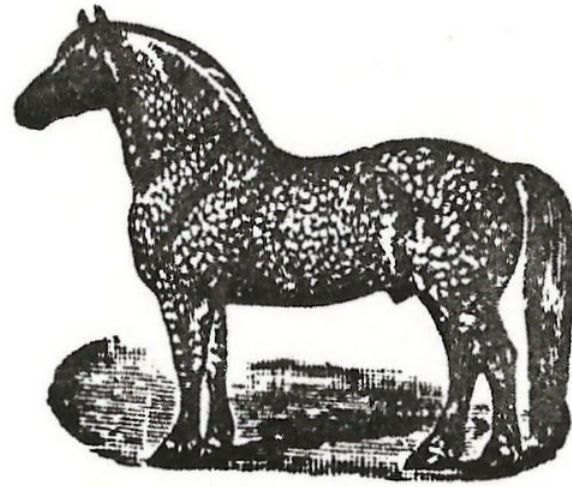


BLOOMINGDALE HOUSE,
ARTHUR SHIPPEE, Proprietor.



Bar always stocked with the finest brands of
Liquors and Cigars.

Transient guests will receive all courtesies due
them.



Martin Anderson

*General Blacksmith and
Rubber Tire Doctor*

Wheelwrighting Done on the Premises

MAIN STREET

Bloomington, N. J.



FRED. G. SLOAN
LIVERY AND SALE STABLES

HIGH CLASS HORSES A SPECIALTY
BLOOMINGDALE, N. J.

Telephone 35-W Butler

MARTIN REARDON

MAIN STREET
Bloomingdale, N. J.

Headquarters for

KNICKERBOCKER ICE CREAM

Made of Pure Cream—Taste Tells

Phone 62 Butler

Autos to Rent

Auto Supplies and Storage

All Work Guaranteed

Auto Owners Repair Works and Garage

E. L. Scherer, Proprietor

High Grade Automobile Repairing and Machine Work

(FOREIGN AND DOMESTIC CARS)

Paterson and Hamburg Turnpike at the Fountain
BLOOMINGDALE, N. J.

Branch Office :
AJAX OIL AND GREASE CO.
(Of New York)

Branch of
AUTO OWNERS REPAIR WORKS
(Of Bridgeport, Conn.)

Agency for Studebaker Cars

High Grade Bicycle Repairing

Sam'l. R. Donald.

GROCCER.

Union Goods a Specialty.

CHOICE

CREAMERY BUTTER,

FRESH EGGS,

Sugars, Teas, Coffees, Spices,

MOLASSES and SYRUP,

And Choice Family Provisions Generally

Flour, Feed and Grain

AT BOTTOM PRICES.

Tropical Fruits:

S. R. DONALD,

Justice of the Peace,

Commissioner of Deeds.

Estates Sett'ed and Real Estates Managed

RENTS COLLECTED

Acts as Executor, Administrator, &c.

Does a General Legal Business.

Desirable properties at all times
for sale.

Money to loan on bond and mort-
gage.

BLOOMINGDALE, N. J.

Do You Want to Buy a Farm?

I have one of the best dairy farms in Northern New Jersey, containing 190 acres, about 100 in grass and in excellent condition ; large 15-room house, 2 barns, granary and other out-buildings close by, and an ideal place for summer boarders. Must be seen to be appreciated. Located at Midvale, N. J.

I have also one of the best stock farms in Northern New Jersey, containing 194 acres, 100 of which are tilable and in splendid condition, well watered, good house, ample barn room, 50 box stalls, granary and other out-buildings; half-mile track laid out and work commenced. Located at Pompton on the Paterson and Hamburg Turnpike. Known as the Cedar Forest Stock Farm.

I have also several homes for sale in the Borough of Butler, ranging in price from \$1,500 to \$5,000. Every one of them money makers.

I have also 50 lots for sale cheap, according to location, in Bloomingdale.

I have also a desirable property for sale, or will exchange for building lots in Butler or Bloomingdale.

For prices and terms, apply to

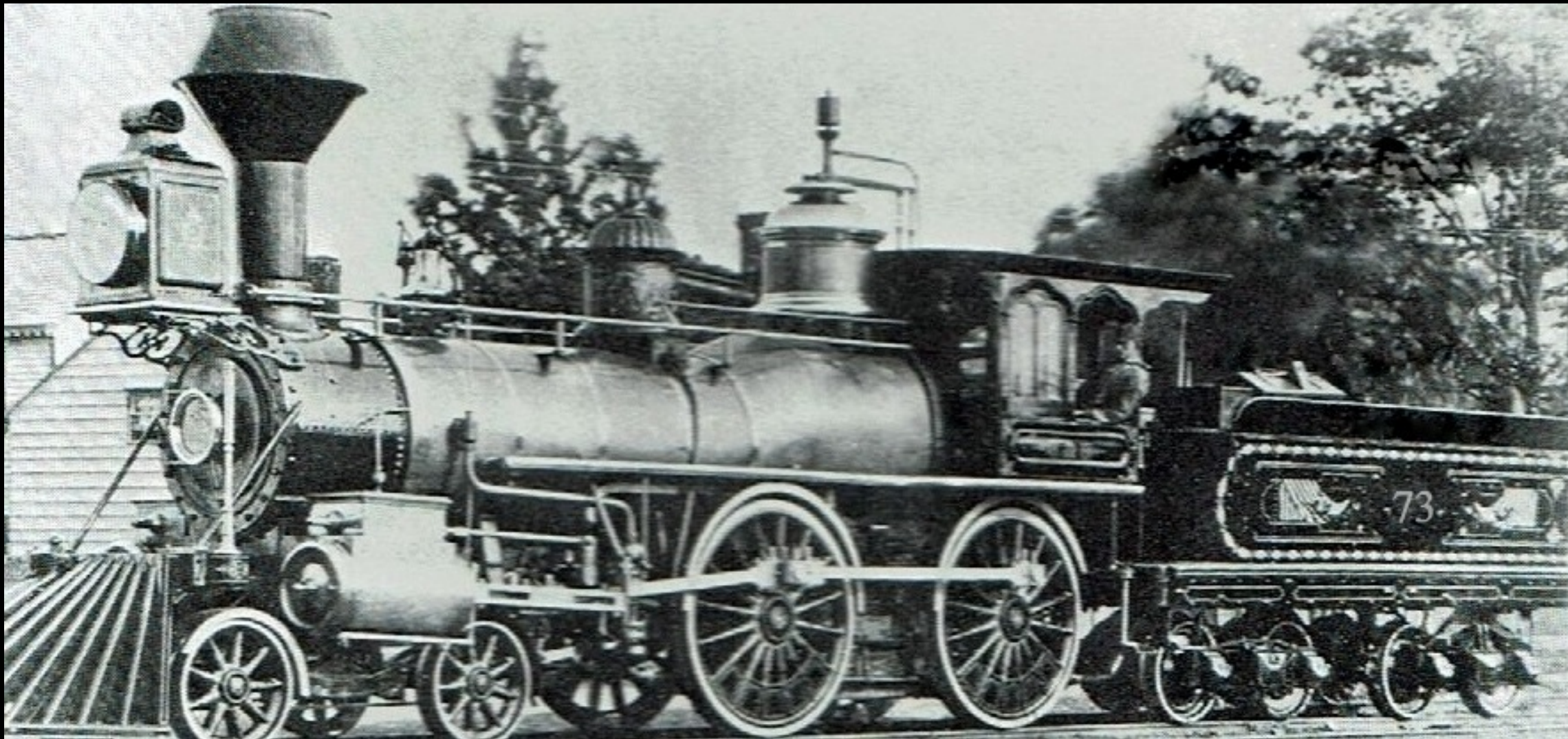
S. R. DONALD,
Real Estate and Fire Insurance, Bloomingdale.

P. S.—Parties having money to place on bond and mortgage will make no mistake by consulting me, thereby saving the annoyance of money-seekers, as I cater only to gilt-edge risks. Rents collected.



Ella (Luke) Bogue, Charles Little, Mabel Little, Julia (Wagner) Little, Charles Bogue
circa 1922? in front of 106 Glenwild Avenue, Bloomingdale, NJ





First Train To Bloomingdale 1871



M.P. 36.8

BLOOMINGDALE

Martin Ryerson, a New Jersey Midland director and local businessman, insisted that a station for Bloomingdale be established. The station was actually located across the Pequannock River and outside of the borough in what is now Riverdale. In this view from a later era, the station, downgraded to a flag stop, has undergone extensive alterations.
(Railroad Museum of Pennsylvania, PHMC)

Ref. "The Next Station" Vol. 1



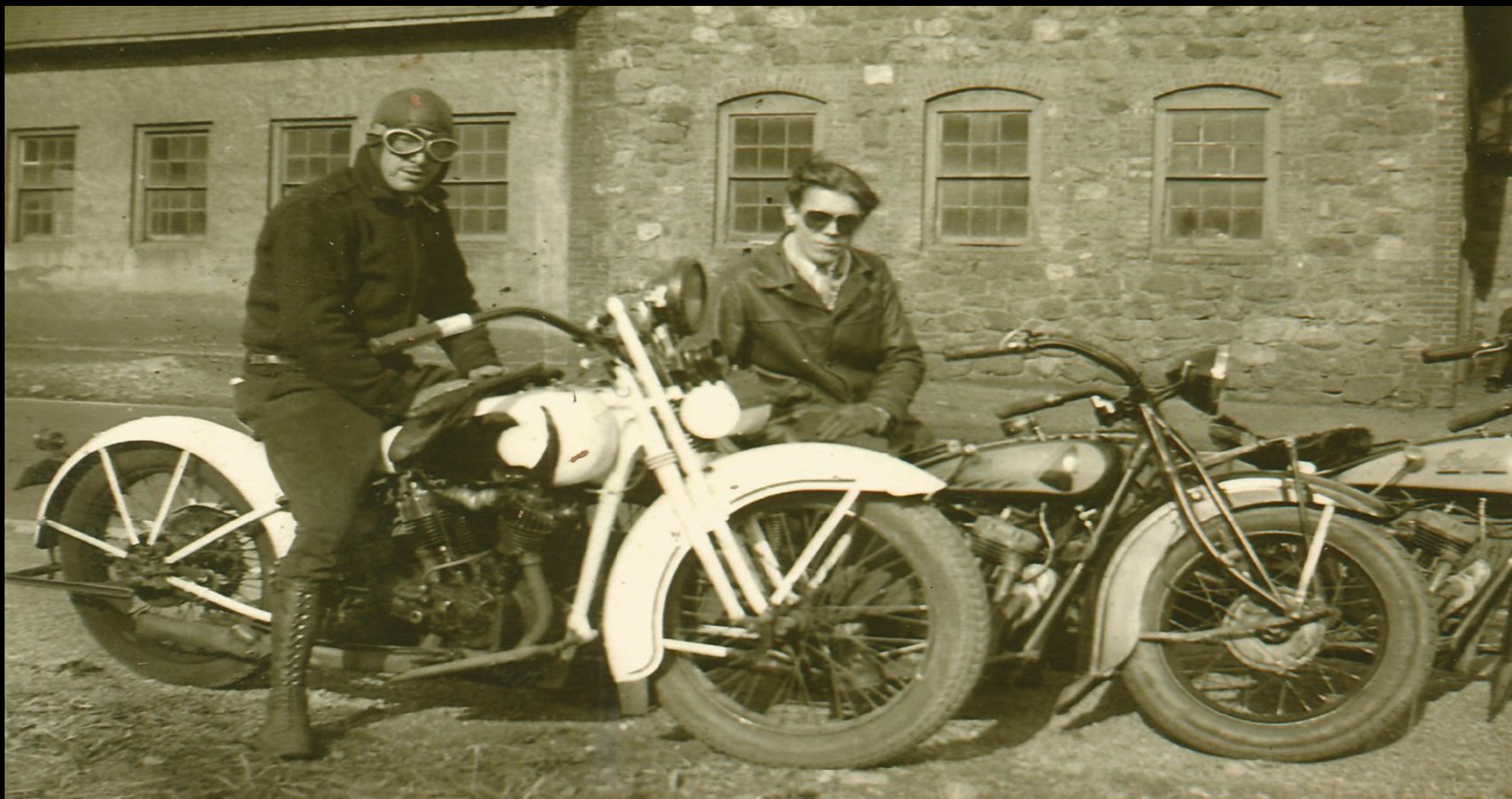


PATERSON POMPTON LAKES BUTLER

G. W. STALTER - RED STAR BUS LINE

PATERSON-POMPTON LAKES
Bloomingdale-Butler

63

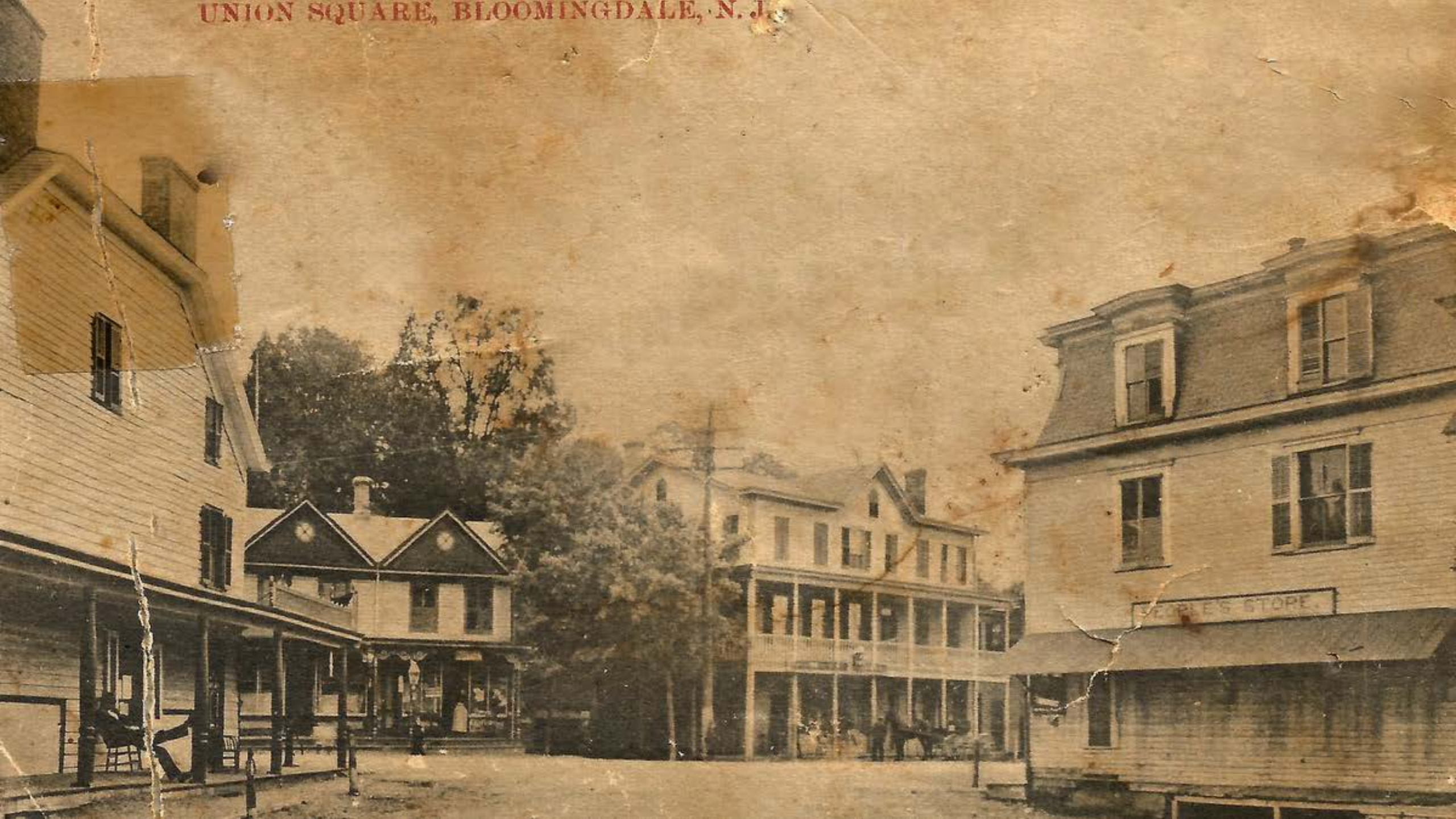


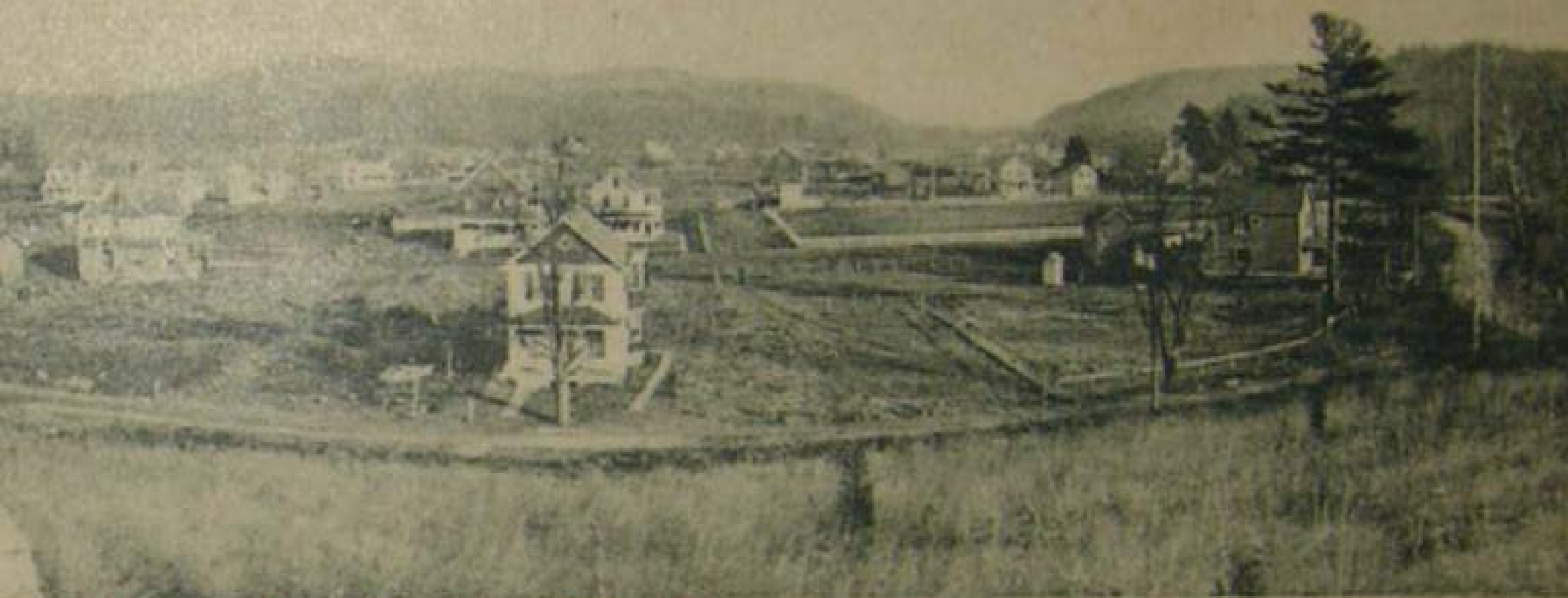
Indian Motorcycles (Arnold Riley on Left)





UNION SQUARE, BLOOMINGDALE, N. J.





Bloomingdale, N. J.



Bloomingdale,



“The Flats”



“The Flats”



Site of Post Office on Left





Corner of Reeve & Main Streets



Union Square, Site of Thai Jasmine Cuisine on left



Main Street Site of Car Wash on Left

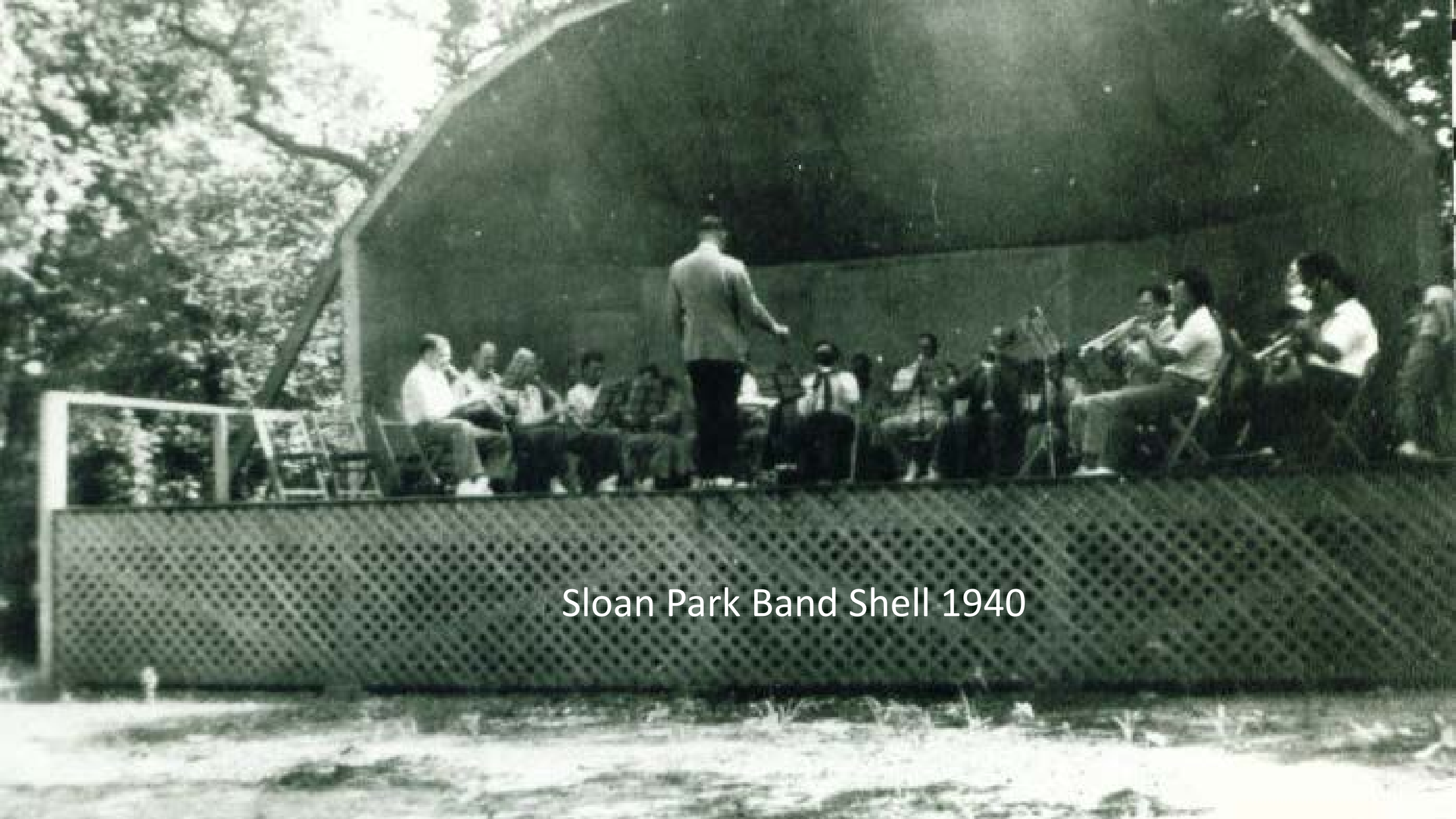






Bloomington Officials - Roy Mickens, Bob DeLazier, Harold Baird, Bob DeVourney, Horace Ricker, Scotty Van Duyne, Frank Huber





Sloan Park Band Shell 1940

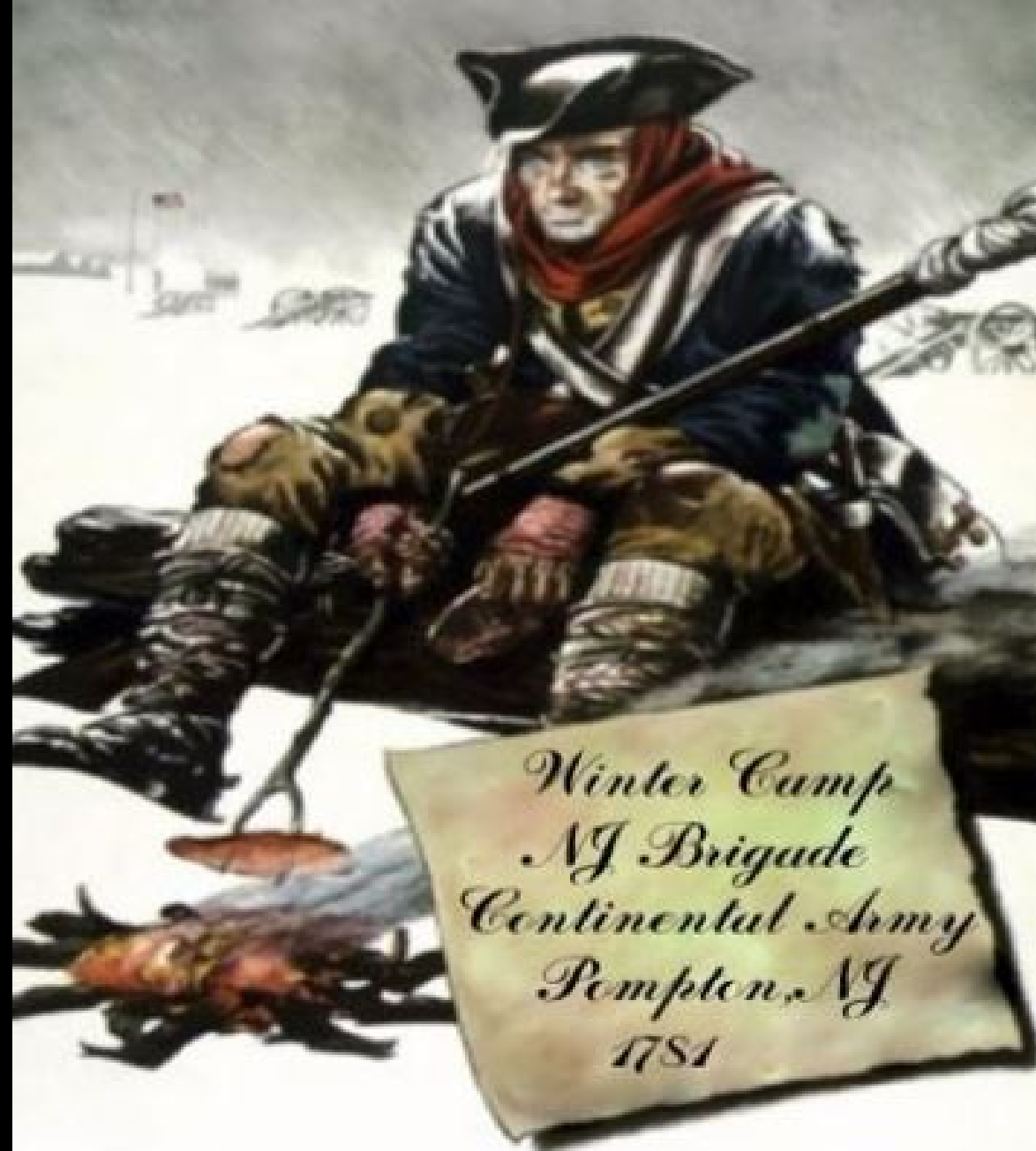




THE FIRST NATIONAL BANK OF BLOOMINGDALE



Bloomington First National Bank



Revolutionary War Pompton Mutiny

FEDERAL HILL HISTORIC SITE

The site of the Revolutionary War era Pompton Mutiny which occurred in the cold harsh winter of 1781. It was in the eastern valley overlooking Bloomingdale that an encampment of weary troops mutinied. Consequently, their two ringleaders were arrested, tried, and executed in the vicinity of what is now known as Union Avenue.





POMPTON MUTINY

**AFTER FIVE LONG WINTERS
OF COLD, HUNGER, AND
DISEASE, AND AT A
CRUCIAL PERIOD IN THE
REVOLUTIONARY WAR,
THE NEW JERSEY LINE
MUTINIED JAN. 20, 1781.**

**TWO MUTINEERS WERE SHOT
AND THE UPRISING SUPPRESSED.**





**Federal Hill
Revolutionary War Signal Beacon**



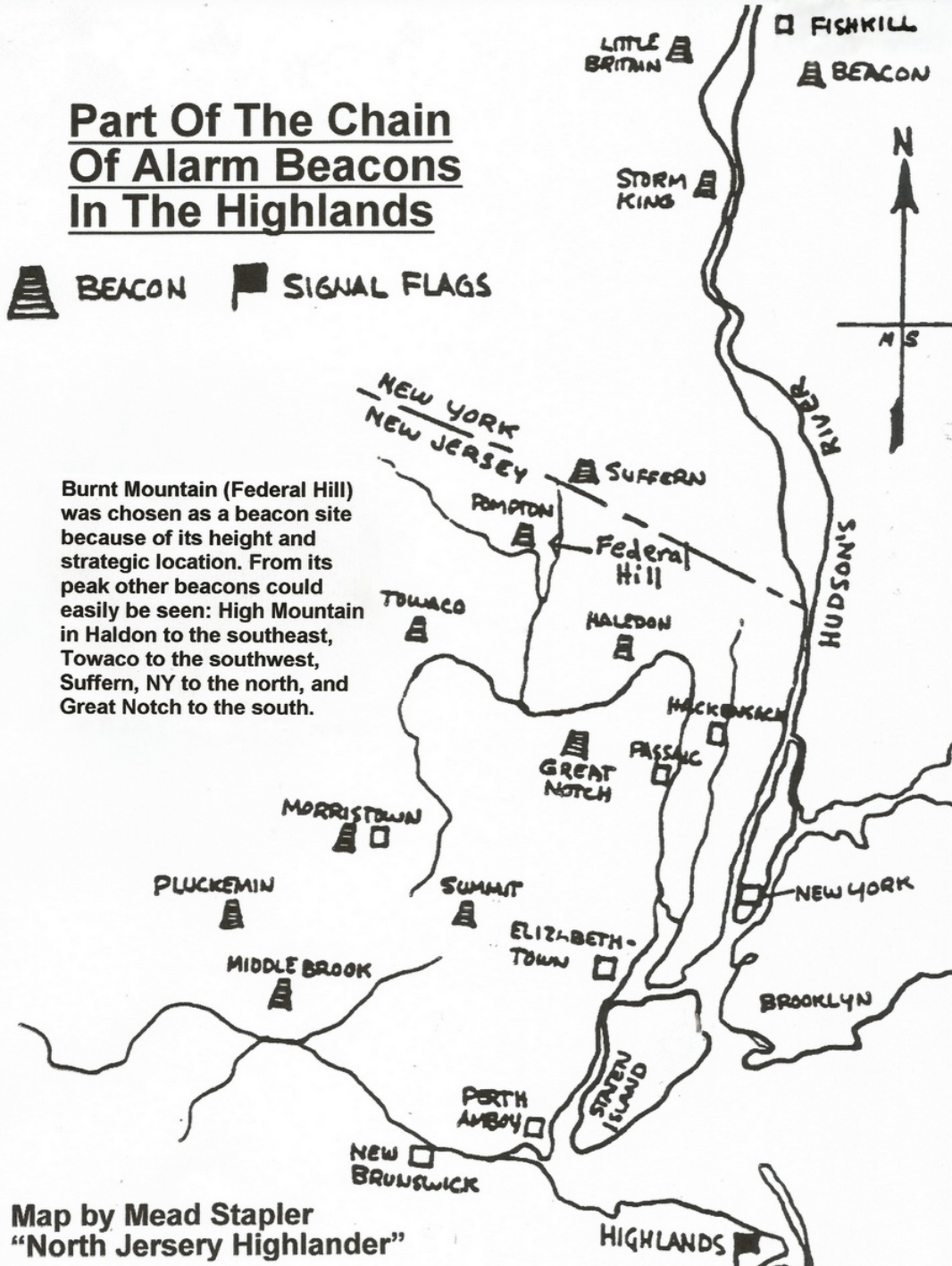




Part Of The Chain Of Alarm Beacons In The Highlands



Burnt Mountain (Federal Hill) was chosen as a beacon site because of its height and strategic location. From its peak other beacons could easily be seen: High Mountain in Haldon to the southeast, Towaco to the southwest, Suffern, NY to the north, and Great Notch to the south.



Map by Mead Stapler
"North Jersey Highlander"



Camp Bergwald

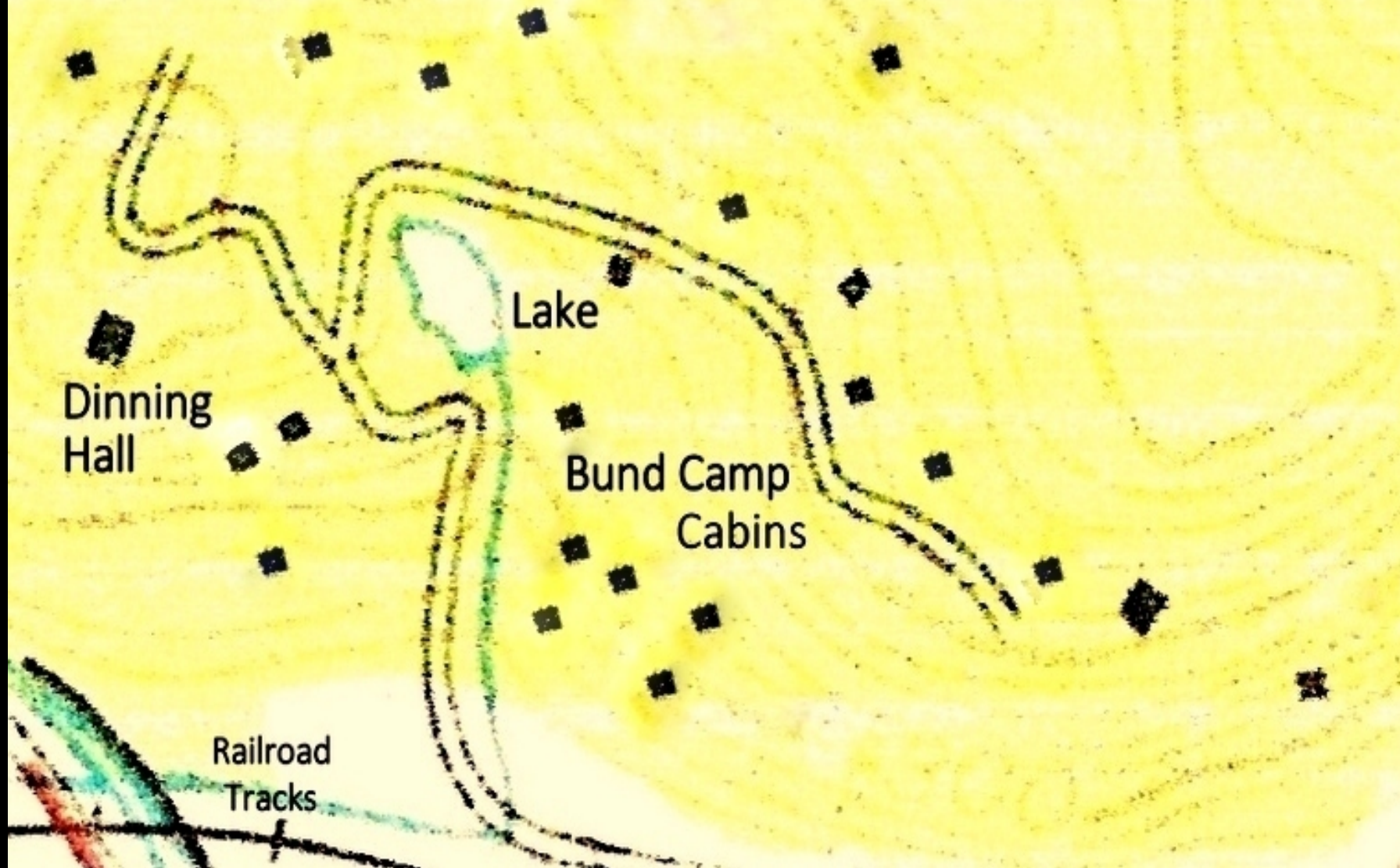
Bloomington, NJ





Camp Bergwald

Federal Hill Bloomingdale, NJ



BUND PARADE CURB SOUGHT
Special to THE NEW YORK TIMES.
New York Times (1857-Current file); Jul 7, 1940;
pg. 7

BUND PARADE CURB SOUGHT

Bloomingtondale Sets Hearing on Final Passage of Law

Special to THE NEW YORK TIMES.

BLOOMINGDALE, N. J., July 6—

A public hearing for final passage of an ordinance prohibiting parades and public demonstrations without a permit will be held at 8 P. M. Tuesday in the Municipal Building. The bill is aimed at curbing activities at the German-American Vocational League camp atop the historic Federal Hill here.



Camp Bergwald
Federal Hill

*MEMBER:
GER-A.M.BUND
HEIL HITLER!



“D.A.B.”

“Deutsche-Amerikanische Berufsgemeinschaft”

Translates to in English:

“German-American Professional Association”

aka

German-American Vocational League

An Affiliate of the

German-American Bund

Delazier Field & The Bloomingdale Troopers



Delazier Field 1946 1947 1948

Bloomington Troopers



By Tom Riley









