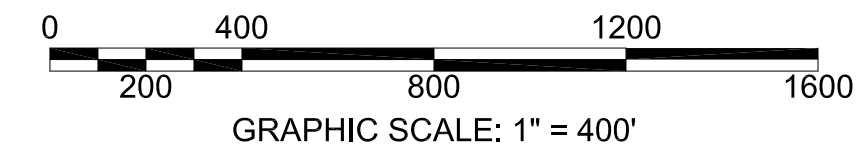
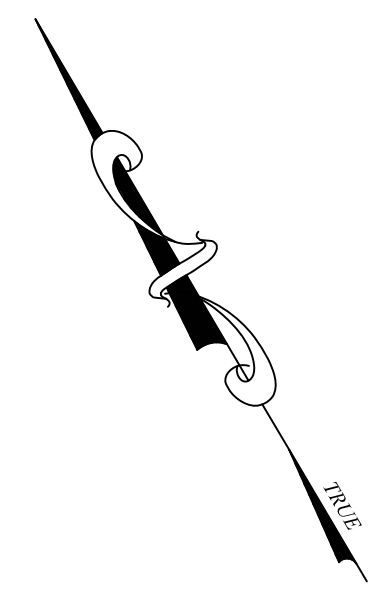
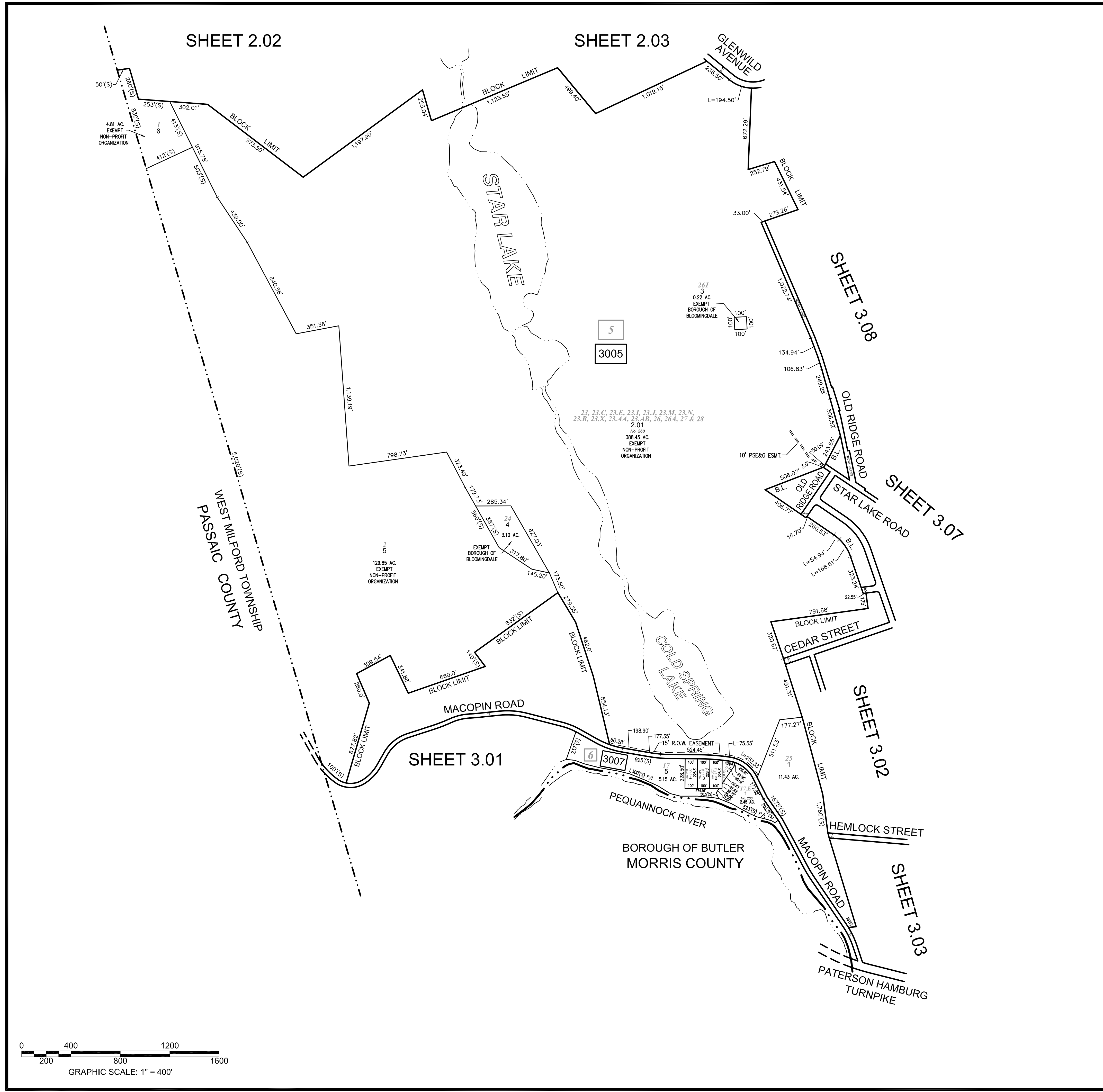


REVISIONS			
DATE	L. S. NAME	LIC. NO.	DESCRIPTION

THIS MAP HAS BEEN DRAWN USING COMPUTER AIDED DRAFTING/DESIGN (CAD/D) UNDER THE SUPERVISION OF



NEW JERSEY DEPARTMENT OF THE TREASURY  
 DIVISION OF TAXATION  
 APPROVED AS A TAX MAP PURSUANT TO THE AUTHORITY OF  
 N.J.S.A. 64:1-16 AND N.J.S.A. 64:5-4  
 FOR THE DIRECTOR, DIVISION OF TAXATION  
*[Signature]*  
 TRACY A. FIELD, Principal Field Representative  
 DATE DEC 30 2014 SERIAL NO. 1051

**TAX MAP**  
**BOROUGH OF BLOOMINGDALE**  
 PASSAIC COUNTY, NEW JERSEY  
 SCALE: 1"=400' 01/01/2014  
**ROBERT L. CIGOL**  
 NEW JERSEY LICENSED LAND SURVEYOR  
 LICENSE NO. 24GS04026100 CERTIFICATE OF AUTHORIZATION NO. 24GA27919000  
**DMC ASSOCIATES, INC.**  
 211 MAIN STREET  
 BUTLER, N.J. 07405  
 TO SHOW CONDITIONS AS OF 01/01/2014