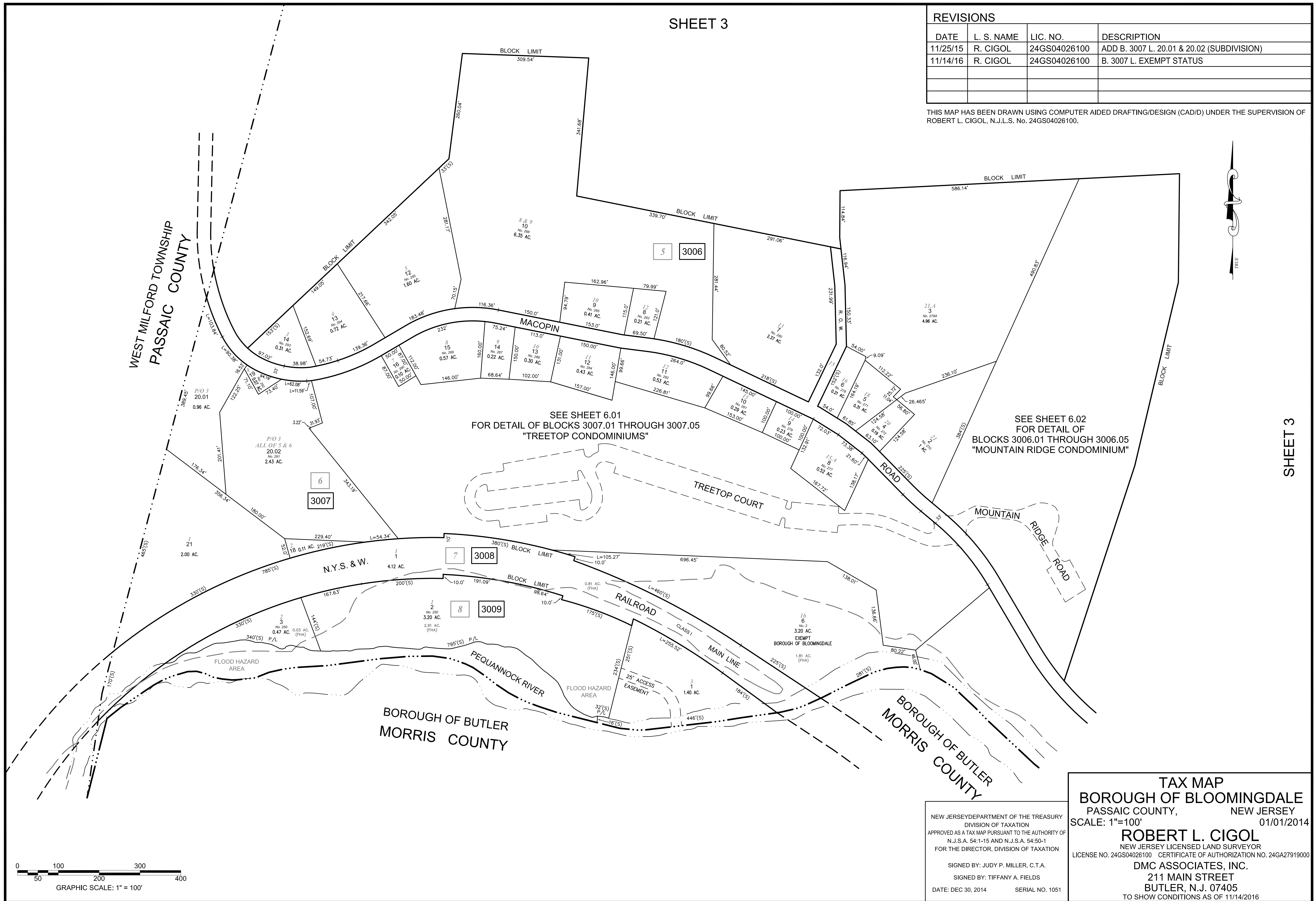


SHEET 3

REVISIONS			
DATE	L. S. NAME	LIC. NO.	DESCRIPTION
11/25/15	R. CIGOL	24GS04026100	ADD B. 3007 L. 20.01 & 20.02 (SUBDIVISION)
11/14/16	R. CIGOL	24GS04026100	B. 3007 L. EXEMPT STATUS

THIS MAP HAS BEEN DRAWN USING COMPUTER AIDED DRAFTING/DESIGN (CAD/D) UNDER THE SUPERVISION OF ROBERT L. CIGOL, N.J.L.S. No. 24GS04026100.



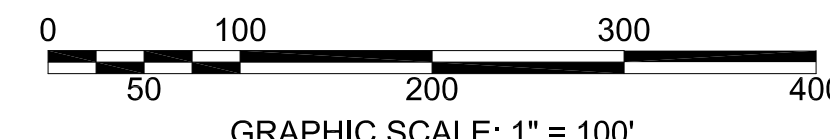
WEST MILFORD TOWNSHIP
PASSAIC COUNTY

BOROUGH OF BUTLER
MORRIS COUNTY

BOROUGH OF BUTLER
MORRIS COUNTY

SEE SHEET 6.01
FOR DETAIL OF BLOCKS 3007.01 THROUGH 3007.05
"TREETOP CONDOMINIUMS"

SEE SHEET 6.02
FOR DETAIL OF
BLOCKS 3006.01 THROUGH 3006.05
"MOUNTAIN RIDGE CONDOMINIUM"



SHEET 3

TAX MAP
BOROUGH OF BLOOMINGDALE
 PASSAIC COUNTY, NEW JERSEY
 SCALE: 1"=100' 01/01/2014

ROBERT L. CIGOL
 NEW JERSEY LICENSED LAND SURVEYOR
 LICENSE NO. 24GS04026100 CERTIFICATE OF AUTHORIZATION NO. 24GA27919000

DMC ASSOCIATES, INC.
 211 MAIN STREET
 BUTLER, N.J. 07405
 TO SHOW CONDITIONS AS OF 11/14/2016

NEW JERSEY DEPARTMENT OF THE TREASURY
 DIVISION OF TAXATION
 APPROVED AS A TAX MAP PURSUANT TO THE AUTHORITY OF
 N.J.S.A. 54:1-15 AND N.J.S.A. 54:50-1
 FOR THE DIRECTOR, DIVISION OF TAXATION

SIGNED BY: JUDY P. MILLER, C.T.A.
 SIGNED BY: TIFFANY A. FIELDS
 DATE: DEC 30, 2014 SERIAL NO. 1051